

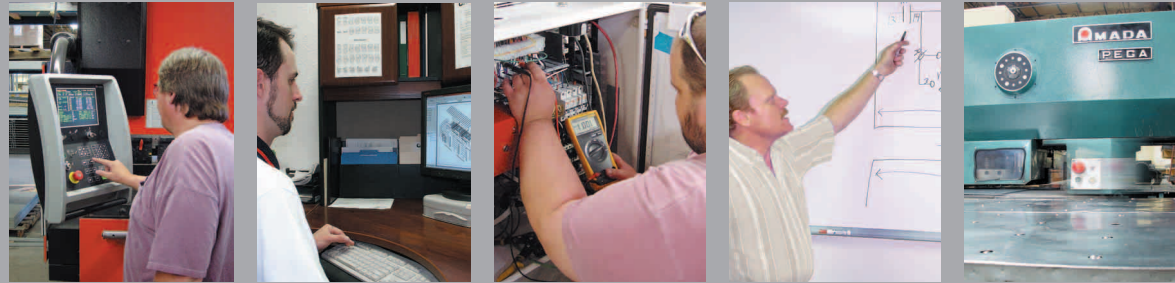
3000 SERIES SPRAY BOOTHS



UNSURPASSED AMERICAN QUALITY

MISSION STATEMENT

Garmat® USA's mission is to provide innovative and cutting edge technologically advanced products that enhance your facility's productivity and profitability, while providing an environmentally safe atmosphere for the refinish technician.



All Garmat® products are manufactured in the USA. This allows for the flexibility of working more closely with you to specially design equipment to meet almost any requirement.



Garmat® USA was established in 1988 to provide quality refinish equipment to the North American Market. Our corporate offices, manufacturing facility, R&D and Training facilities are located in Englewood, Colorado.

All Garmat® USA cabins and mechanical units are designed and manufactured at our Englewood Colorado facility. Each unit is built for your specific application. Every control panel and mechanical unit is tested before leaving our facility. By manufacturing our own complete air handling systems, we can ensure consistent performance with leading edge technology, for a constantly changing industry.

Why Choose Garmat?

We have a strong and dedicated **Distributor Network**. Each Distributor organization is required to maintain a factory trained and certified technical staff. Our Distributors deliver the highest possible level of after the sale service available in today's market place.

DESIGNED TO MEET YOUR NEEDS

Our **Design Services Department** has earned an outstanding national reputation by providing layout design assistance to thousands of collision repair facilities, architects, and general contractors.

Garmat® USA provides **End User Training Classes** on a regular basis, that are designed to address the real world issues that impact your business and help train your staff on the proper use of the equipment. Proper education at the front end will expedite production and ultimately maximize your profits.

For all of our products we provide **Factory Technical Support** to expeditiously resolve any issues or concerns that there may be regarding the equipment.

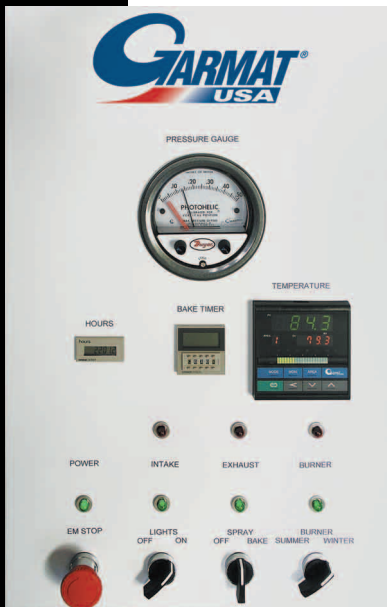
We strive to provide the best distribution, the finest installation personnel and service network throughout the industry and pledge to stand behind our representatives and products.



3000 SERIES SPRAY BOOTHS

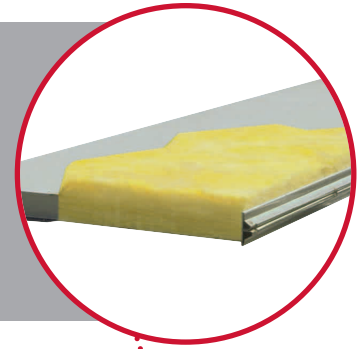


Garmat® USA control panels are designed to make every job more efficient and affordable. Automatic operation of spray, purge, cure and cool down cycles can be pre-set or adjusted. The photohelic gauge gives you automatic cabin pressure control and a fully digital temperature control system allows easy programming of multiple set points to accommodate almost any type of paint specification. Shown with optional Quik-Cure™ Multi-Point Temperature Controller.



INSULATED PANELS

The 3000 Series cabin is constructed of durable powder coated, fully insulated solid interlocking wall panels. The panels are designed to prevent heat loss into the surrounding shop and for greater efficiency during the bake cycle. Both the wall and roof panels are insulated for quieter operation.



VEHICLE & PERSONNEL ACCESS DOORS

All 3000 Series cabins utilize ten foot wide insulated tri-fold door assemblies with built in personnel doors and observation windows. Optional drive through configurations are available.



PROGRAMMABLE LOGIC CONTROLLER

One of many advancements is our internal (PLC) Programmable Logic Controller, which can allow Garmat technicians to remotely perform diagnostic tests and troubleshoot booth functions via optional modem. This greatly minimizes downtime.



Garmat's pledge is to bring you **The Most Technologically Advanced Equipment Available** in the market place.



PACKED WITH FEATURES

EASY ACCESS FILTERS

The 3000 Series cabins are standard with three stage filtration. High quality filtration is the first step to achieving a clean paint job. Ceiling filter racks are designed to allow for ease of replacement.

Through many hours of research and development our engineers have come up with a design that delivers superior airflow, a new “sleek” looking cabin, and the most effective lighting in any booth on the market. We have made standard all of the features that our valued customers have been requesting through the years. A smaller booth foot print means you’ll gain valuable square footage in your body shop. Ten foot wide vehicle entrance doors, interior accessible 4 tube light fixtures and a 27’ cabin, are just a few of the many features of our 3000 Series. All Garmat® USA products are ETL Listed.

PREMIUM LIGHTING

Lighting quality and placement is critical for color matching. Garmat® USA utilizes only the best in color corrected fluorescent bulbs. Each booth is standard with 4 tube interior accessible fixtures that make for easy serviceability. Lights are placed above and below the belt line for optimum illumination.

FLOOR GRATES

Our three row center pit consists of heavy duty, hot dipped, fully galvanized grates providing ample vehicle support.

HEAVY DUTY HINGES

Garmat® USA utilizes custom designed door hinges on all of our spray booths.

- ①— Horizontal and vertical adjustment enables proper door alignment.
- ②— Nylon filler grommets minimize daily wear and tear of the hinge.
- ③— Grease zerk fitting for ease of lubrication.

The Ultimate Centrifugal *Turbo Fan*

To achieve a quality finish with today's paint products, paint manufacturers are requiring various amounts of airflow – ranging from 12,000 to 18,000 CFM! This is why all Garmat® USA intake and exhaust systems utilize high powered centrifugal turbo fans that are belt driven and adjustable to your specifications.

BELT DRIVEN

Ensure many years of reliable operation with a dual belt drive system that is easily adjustable and requires minimal service.

ADJUSTABLE AIR FLOW

Our variable speed drive system is designed to achieve balanced air flow throughout the cabin. This gives you the flexibility to meet your specific site conditions and accommodate emerging paint technologies.

REVERSE INCLINE BLADES

Designed to operate against high static pressure, the backward direction of the blades creates a vacuum of air surrounding the fan, reducing noise levels and helping to prevent overspray buildup.

DUAL INLET FAN

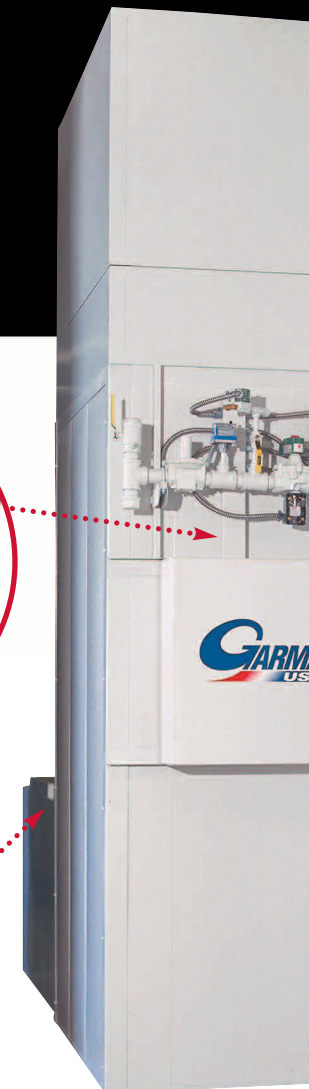
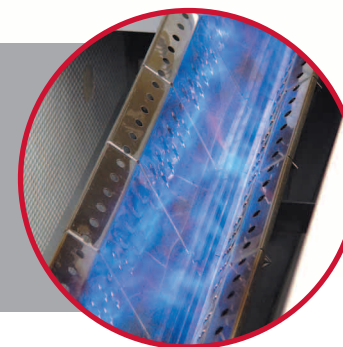
With air intake from both sides, Garmat® USA fans can achieve up to 18,000 CFM in a compact, efficient design with smooth quiet operation.

DIRECT FIRED BURNERS

The Garmat® USA burner systems deliver the rapid temperature rise demanded by today's high solid paint products. Our 98% efficient design can achieve 170° air temperature in less than 120 seconds. Available with 1.0 or 1.5 MTBU burners.

10HP MOTORS

The American made motors used on our intake and exhaust systems are backed by a five year warranty and are 92% efficient for lower operation cost.



Booth Dimensions

	STANDARD 27' Booth	OPTIONAL 24' Booth
EXTERIOR	13'-6 ⁵ / ₈ " W x 27'-2 ¹ / ₄ " L x 10'-10" H	13'-6 ⁵ / ₈ " W x 24'-4 ³ / ₈ " L x 10'-10" H
INTERIOR	13'-1 ¹ / ₂ " W x 26'-9 ¹ / ₄ " L x 8'-10 ¹ / ₂ " H	13'-1 ¹ / ₂ " W x 23'-11 ³ / ₈ " L x 8'-10 ¹ / ₂ " H
3 ROW PIT	6'-7" W x 19'-7 ³ / ₄ " L	6'-7" W x 16'-5" L
ABOVE GROUND BASEMENT	27' Booth	24' Booth
EXTERIOR	13'-6 ⁵ / ₈ " W x 27'-6" L x 12'-1 ³ / ₄ " H	13'-6 ⁵ / ₈ " W x 24'-8 ¹ / ₈ " L x 12'-1 ³ / ₄ " H
INTERIOR	13'-1 ¹ / ₂ " W x 26'-9 ¹ / ₄ " L x 8'-8 ¹ / ₂ " H	13'-1 ¹ / ₂ " W x 23'-11 ³ / ₈ " L x 8'-8 ¹ / ₂ " H
RAMP LENGTH	9'-10 ⁷ / ₈ "	9'-10 ⁷ / ₈ "
DOOR OPENING SIZES		
TRI-FOLD	10'-0 ¹ / ₁₆ " W x 8'-10 ¹ / ₈ " H	SIDE SERVICE 2'-11 ¹ / ₂ " W x 6'-9 ¹ / ₂ " H

3000 SERIES SPRAY BOOTHS

Garmat® USA 3000 Series are full downdraft, double wall insulated paint booths. The 3000 cabins are ETL listed, as are the Garmat mechanicals and electrical control panels. The 3000 cabins are standard 27' length, with 10' wide tri-fold vehicle entry doors, 4 tube interior accessible light fixtures, three-row center pit and if drive-in/back-out configuration, a side service door is included. Additional options include, above ground basement, booth extension, drive-thru doors and rear wall light package.

CABIN ASSEMBLY

Lengths: Standard 27', Optional 24' or 30'

The cabin is constructed of durable powder coated, fully insulated solid interlocking wall panels. The panels are designed to prevent heat loss into the surrounding shop and for greater efficiency during the bake cycle. Both the wall and roof panels are insulated for high temperature curing and quieter operation.

DOORS

Entrance: Rubber sealed doors with heavy duty hinges. If booth is a drive-in/back-out configuration, there is a service door supplied to conform with national requirements.

Side Service: Equipped with a tempered safety glass observation window.

LIGHTING ASSEMBLY

92 energy efficient color corrected fluorescent tubes, 23 horizontal light fixtures, with four bulbs per fixture. The T8 light fixtures contain an electronic ballast that complies to the 2005 energy efficiency requirements and are fitted with tempered glass. Interior accessible fixtures are standard on the 3000 Series.

BOOTH FILTRATION SYSTEM

Pre-Filtration: Long lasting washable pre-filters reduce contamination of ceiling filters.

Ceiling Filters: Filters are rated at 99% efficiency on 10 micron particulate and are held in position by steel knife edge closures.

Extract Filters: Standard fiberglass paint arrestor filters are utilized for maximum particulate removal.

GRATES

Fully galvanized grates and support structure.

ELECTRICAL SYSTEM

All Garmat® USA products are provided with a listed industrial electrical control panel. All components are recognized, listed or certified by UL, ETL, or CSA. All booths are standard with a prewired control package for reduced field installation time and costs.

FIRE SUPPRESSION

Booth is designed for addition of fire suppression equipment (supplied by others). Prewired for automatic shut down if required.

MECHANICAL UNIT

12,000-18,000 CFM, variable sheave belt drive, 10HP (15 HP optional) intake and exhaust motors, reverse incline centrifugal fans. 840,000, 1 Million or 1.5 Million BTU direct fired burner, 80-90% recycle during bake, 25:1 turn-down ratio for heat control.

SPRAY CYCLE

100% outside air is drawn through pre-filters, heated to recommended temperature, passed through ceiling filters into the cabin, and extracted through floor filters.

BAKE CYCLE

Fully automatic, including purge and cool-down cycle. 10-20% fresh air is introduced into cabin and exhausted through fiberglass filters to the outside during the bake cycle. Cabin lights turn off automatically during the bake cycle. Quik-Cure™ Multi-Set Point temperature controller is an available option.

CONTROL PANEL

Digital temperature controller, safety interlocks - indicator lights, hour meter, bake timer, cycle selector, state of the art programmable logic controller offers precise control and diagnostic capabilities of the operating systems, and photohelic gauge, providing automatic pressure control, are all standard features on this model series. A 50 ft. quick connect remote cable is supplied with this unit.



Garmat® USA reserves the right to modify or change any of the technical features mentioned in this brochure. ©2002 Garmat® USA